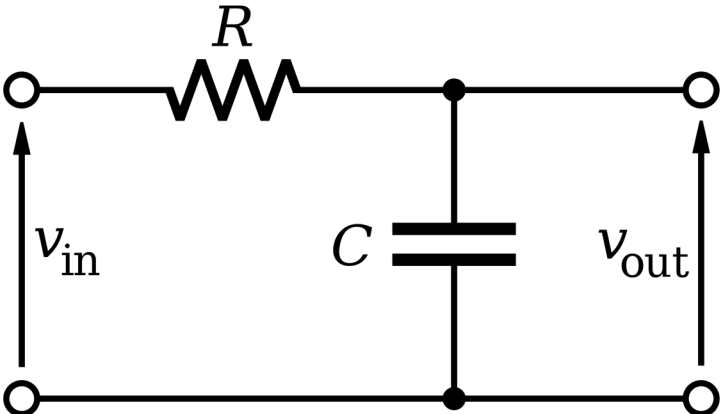


Low Pass Filter with a cut-off:



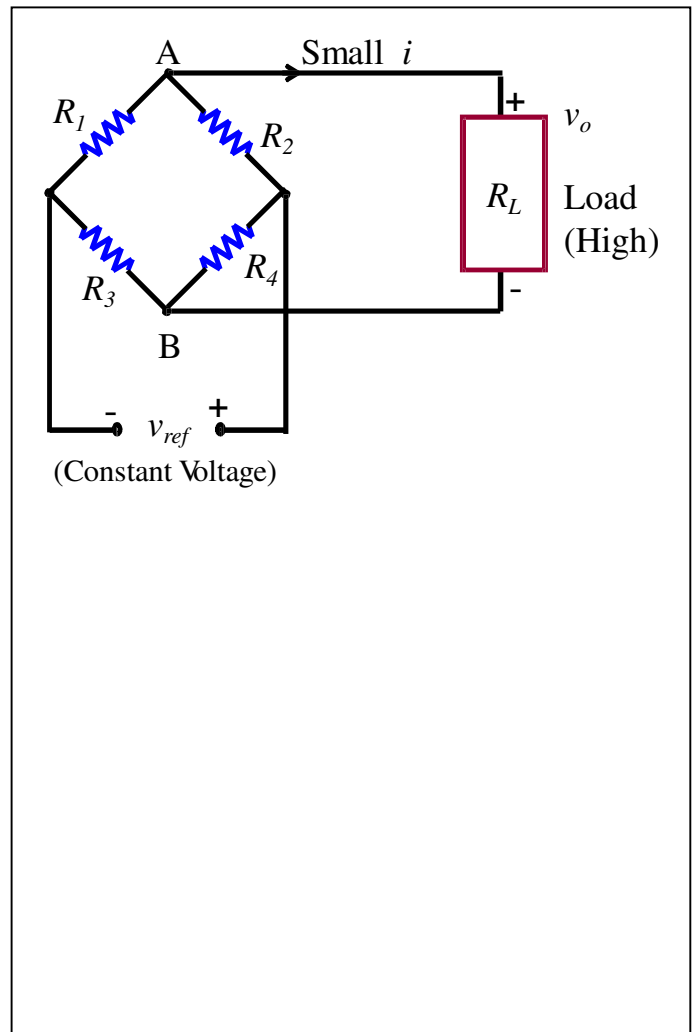
What if you applied a sine wave to this filter?

What if you applied a Step Function to this filter?

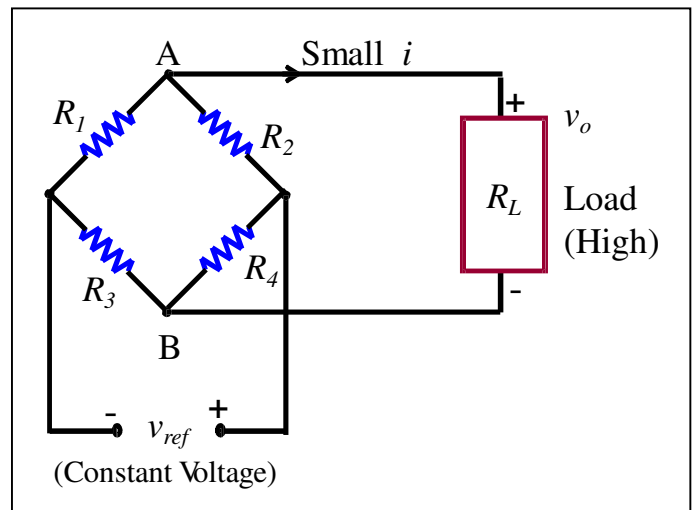
Bridge Circuits:

Bridge circuits are used to make a form of measurement:

- Change in resistance
- Change in inductance
- Change in capacitance
- Oscillating frequency

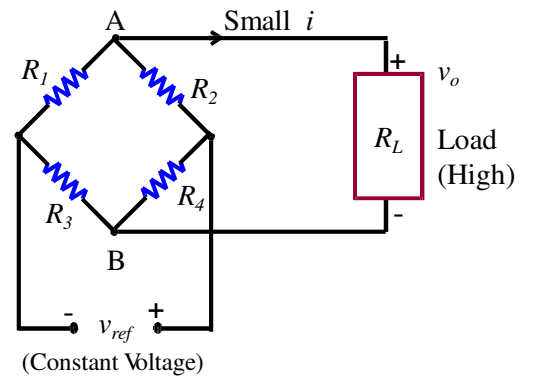


Continuing



Example:

Suppose that in Figure on the right, at first $R_1 = R_2 = R_3 = R_4$. Now increase R_1 by δR , decrease R_2 by δR . This will represent two active elements that act in reverse, as in the case of two strain gage elements mounted on the top and the bottom surfaces of a beam in bending. Show that the bridge output is linear in δR in this case.



Solution:

